

Memorial Stadium
Friday, November 17, 1972
Sophomore Game 5:45
Varsity Game 8:15

PROFITS FROM PROGRAMS DONATED
TO BURROUGHS BOYS COUNCIL '72

BURBANK BULLDOGS
VS.
BURROUGHS INDIANS

1972

FB

PROGRAM .25 CENTS

by **BOB DUNIVANT**, Head Coach, and **JEFF TAYLOR**, Editor

After 23 years of competition, the Burbank - Burroughs game will decide the Foothill League Championship for the second time in history. The last time the championship was decided in the final crosstown rivalry was back in 1956, with Burbank winning 18 to 0. Burbank holds the edge over wins with 12 wins, to the Indian's 11, in the past 23 years.

The Foothill League could wind up in a three-way tie for first, if Burroughs wins tonight, and C.V. takes Blair. However, if C.V. should lose, Burroughs and Burbank would share the championship. If Burbank wins tonight, it would establish Burbank as the undefeated champions of the Foothill League, and they would represent the League in the CIF Playoffs. In case of a three way tie, the Foothill League Principals would be polled to establish the league representative. It's all pretty complicated.

The game tonight brings together two strong teams, Burbank with super-soph star Ken Walker, and Kirk Roberts at Fullback. Quarterback Leo Orange is coming off his best game of the year, beating C.V. and completing 6 out of 7 passes. Burbank has been steadily improving, and either way, Burbank and Burroughs are definitely the 'best' two teams in the Foothill League, so it should make for an interesting game.

The Indians remain as the most balanced team in the League. The Bulldogs must stop the forward-pass, to win. Curtis Ihle and Mike Funk have established themselves as the 'best' Quarterbacks in the League, for both being Juniors. On the receiving end, the Split Receivers are led by Junior Randy Simmrin with three Touchdowns on the right side, and Randy Stage and Mike Stewart on the left. At Fullback, Mike McGehee is in no doubt one of the best, at Halfback, A.J. Brick and Craig Beaubien are the strong leaders. The Indians this year have the most balanced passing team with Curtis Ihle as the school's 'All Time Best Quarterback'.

This should be the most exciting and closest game in the history of the Burbank - Burroughs Rivalry. The Coaching Staff at Burroughs would like to thank all of the loyal supporters that have come out this year, to watch our team compile the best standings in the school's history. Whatever the end, Burbank and Burroughs will remain the top teams in the Foothill League.

INDIVIDUAL PASSING

	ATT	COMP	PI	NYG	% COMP	TD
IHLE	145	84	8	1184	58%	14
FUNK	17	6	2	79	35%	2
BRICK	1	-	-	-	-	-

PUNTING

	NO.	YDS.	AVG.
JARBO	21	781	37.1
RAINES	2	46	23.0

P. A. T.

	ATT.	COMP.	%COMP
D. McGEHEE	27	21	77%

PUNT RETURNS

	NO.	YDS.	AVG.
SIMMRIN	5	124	24.8
BRICK	2	9	4.5

K. O. RETURNS

	NO.	YDS.	AVG.
SINGLETON	6	122	20.3
STEELE	5	127	25.4
TALAMANTES	2	23	11.5

INDIVIDUAL RUSHING

	TCB	YG	YL	NYG	AVG	TD
BEAUBIEN	88	349	-29	320	3.6	4
McGEHEE	92	668	-5	663	7.2	3
IHLE	29	36	-127	-91	-3.1	1
BRICK	15	84	-	84	5.6	1
FUNK	3	17	-8	9	3.0	-
MENDOZA	1	1	-	1	1.0	-
SIMMRIN	4	14	-6	8	2.0	-
SINGLETON	17	86	-	86	4.8	2
RECCHIA	3	3	-1	2	.6	-
GERACE	2	2	-	2	1.0	-
STEELE	9	38	-1	37	4.1	-
REBMAN	1	2	-	2	2.0	-

INDIVIDUAL RECEIVING

	ATT.	COMP	NYG	TD
SIMMRIN	44	26	432	8
STEWART	28	12	208	3
GALBRAITH	23	13	158	2
STAGE	18	11	190	-
BEAUBIEN	10	7	79	-
McGEHEE	10	8	61	1
BRICK	8	6	53	-
CANNON	2	2	25	2
MENDOZA	3	2	9	-
GILBERT	2	1	18	-
TALAMANTES	2	1	15	1
RODE	1	1	17	-
SINGLETON	1	-	-	-

TOTAL STATISTICS

	PLAYS	TYR	YLR	NET RUSH	PASS	TOT. OFF.	AVG
BURROUGHS	427	1300	179	1121	1263	2384	5.6
OPPONENTS	394	1302	244	1058	491	1549	3.9

JBHS PROFILE '72



MR. JIM LLOYD
Burroughs Asst. Principal

MR. SHERM CHAVOOR
Burroughs Principal

Mr. Sherman Chavoer, a former Burroughs Football coach, and the Principal for Burroughs has supported our teams in every way conceivable for many years. He attends every game and is a great morale booster for our teams.



The person partly responsible for the printing of these programs is Mr. Jim Lloyd, Burroughs Assistant Principal. Mr. Lloyd has always been of great support to our teams, as you can see him always doing something at every game.



Sophomore Coaches, (left to right) Head Coach Ken Tada, Bill Barrett, Mike Curtin, Merle Stone



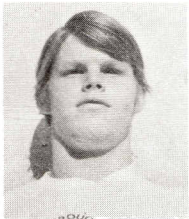
VARSITY TEAM MANAGERS (L to R)

Head Manager John Vanatta, with Assistants Gerald Weldon and Paul Helm.

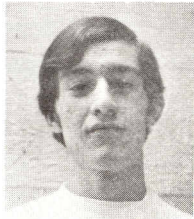


Varsity Coaches, (rear L to 4) Craig Bell, Tony DeMaie, George Rosales, Don Butcher (front L to R) Steve Armstrong and Head Varsity Coach Bob Dunivant.

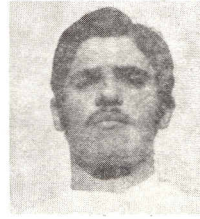
JBHS PROFILE '72



Ron Singleton (11)



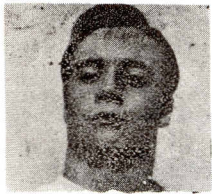
Louis Talamantes (22)



Rick Mendoza (23)



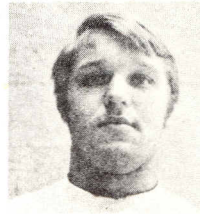
Kevin Recchia (25)



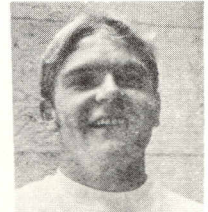
Mike McGehee (30)



Manuel daMotta (32)



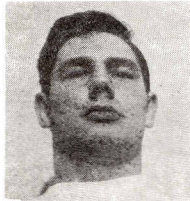
Mike Vensky (33)



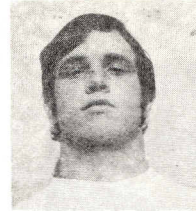
Brian Rebman (34)



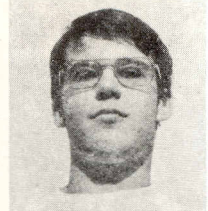
Dennis Vanderwall (50)



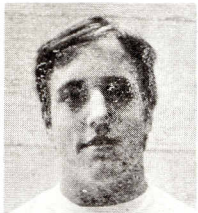
Bill Deahl (53)



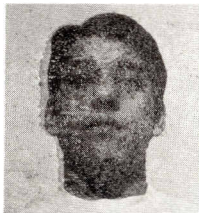
Steve Davis (60)



John Cannon (64)



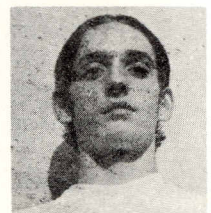
Bob Olson (67)



Mike Delbarian (71)



Don Raines (75)



Randy Stage (83)



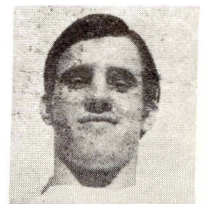
Greg Gilbert (86)



Jay Gudzin (87) (Capt.)



Greg Smith (88)



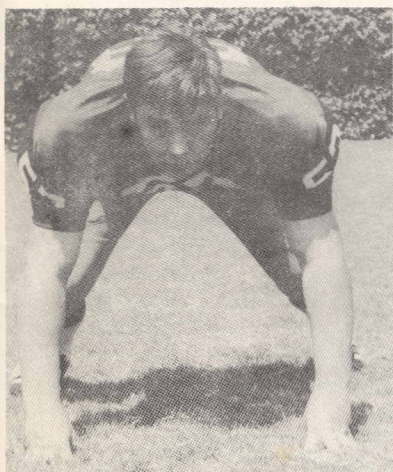
Jim Galbraith (89)



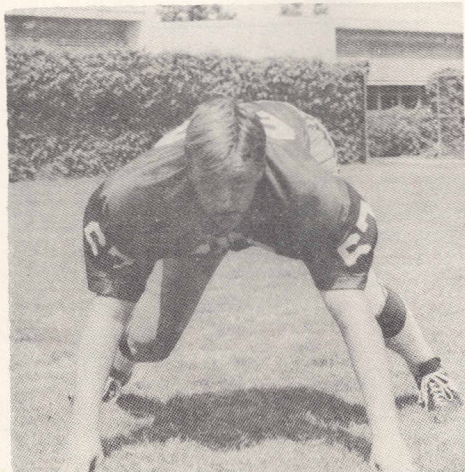
Curtis Ihle (10) moving the ball for Burroughs



Ron Singleton (20) with Rick Mendoza (23) covering

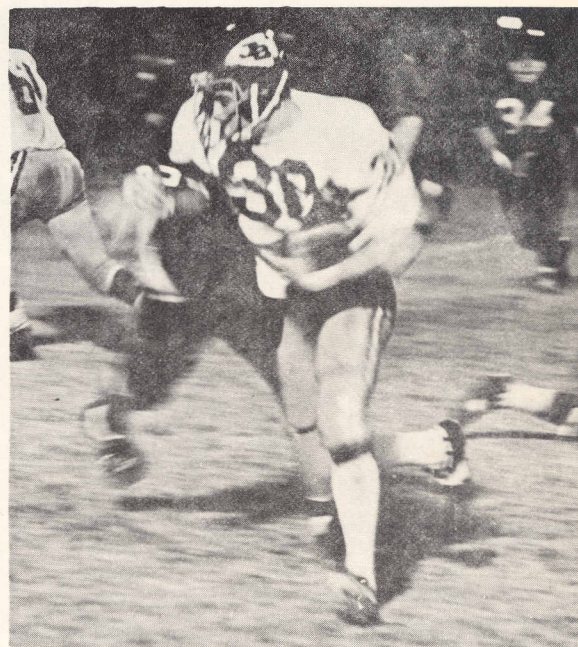


Lineman BILL DEAHL

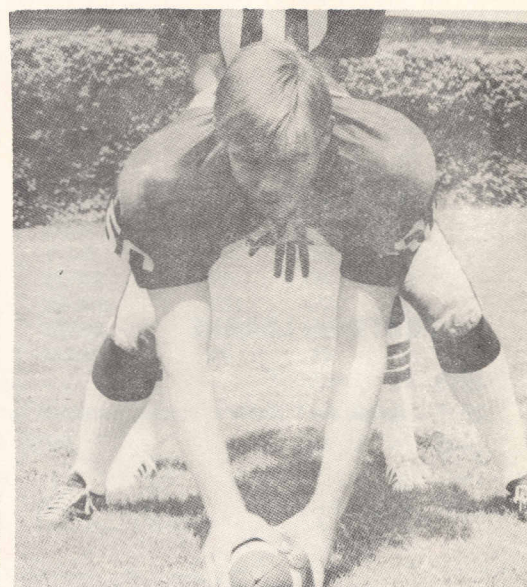


Lineman BOB OLSON

BURROUGHS INDIANS

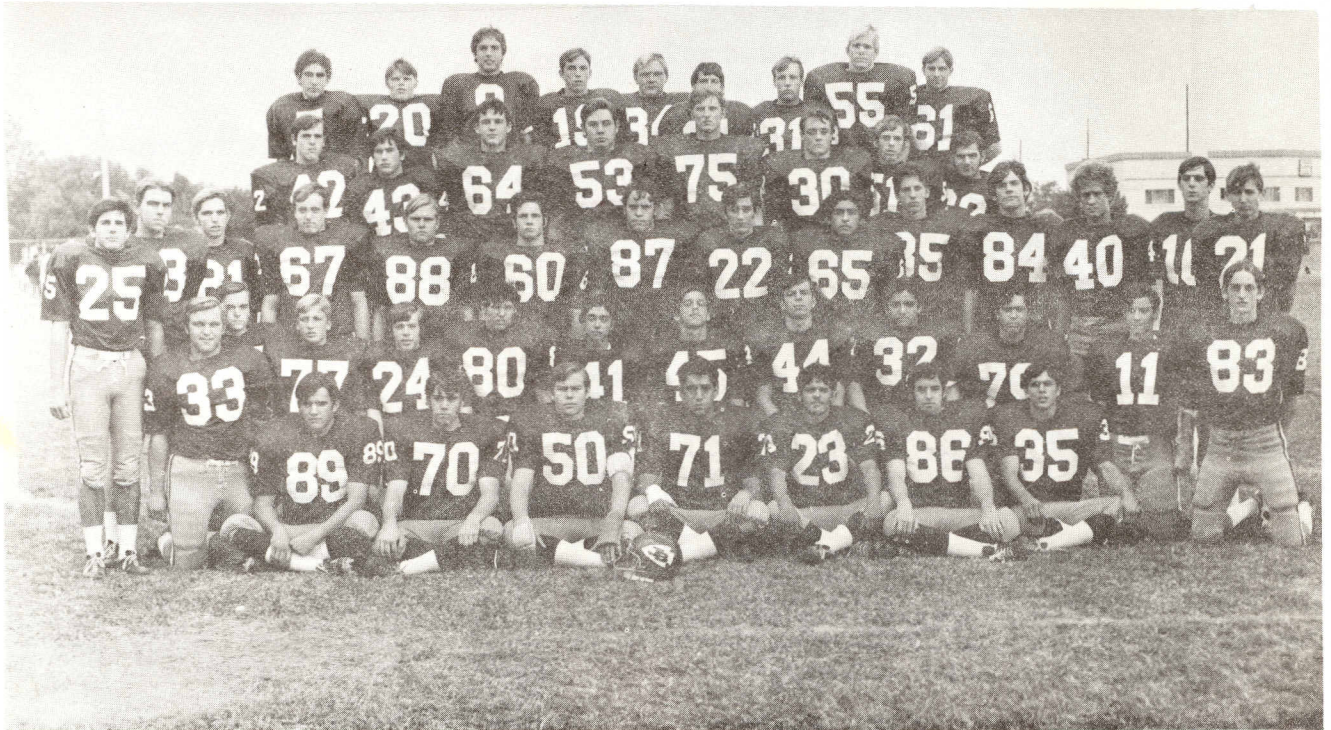


Mike McGehee (30), off for another Touchdown



Center DENNIS VANDERWALL

BURROUGHS INDIANS



The 1972 John Burroughs Varsity Football Team

BURROUGHS SEASON RECORD

7 Wins 1 Loss

JBHS 20 CRESPI 17
JBHS 21 CANYON 0
JBHS 14 SAN MARINO 13
JBHS 42 NO. TORRANCE 15

FOOTHILL LEAGUE

JBHS 40 G.H.S. 0
JBHS 6 C.V. 7
JBHS 26 BLAIR 6
JBHS 20 HOOVER 6
JBHS vs. BURBANK

BURBANK - BURROUGHS RIVALRY

Burbank 12 wins	Burroughs 11 wins
1949 Burroughs 7	Burbank 12
1950 Burroughs 6	Burbank 0
1951 Burroughs 13	Burbank 28
1952 Burroughs 0	Burbank 33
1953 Burroughs 7	Burbank 0
1954 Burroughs 48	Burbank 0
1955 Burroughs 14	Burbank 20
1956 Burroughs 0	Burbank 18
1957 Burroughs 28	Burbank 19
1958 Burroughs 0	Burbank 32
1959 Burroughs 19	Burbank 0
1960 Burroughs 19	Burbank 7
1961 Burroughs 13	Burbank 26
1962 Burroughs 0	Burbank 34
1963 Burroughs 7	Burbank 14
1964 Burroughs 7	Burbank 27
1965 Burroughs 19	Burbank 0
1966 Burroughs 19	Burbank 0
1967 Burroughs 19	Burbank 20
1968 Burroughs 13	Burbank 20
1969 Burroughs 8	Burbank 44
1970 Burroughs 15	Burbank 12
1971 Burroughs 17	Burbank 13

g. Coke.

Trade-mark®

Enjoy
Coca-Cola
Trade-mark®

Burroughs 1972 Varsity

No.	Name	Pos.	Ht.	Wt.	Yr.
7	Keith Van Hoose	QB/DHB	5'10	145	11
9	Mike Funk	QB/DHB	6'0	172	11
10	Curtis Ihle	QB/DHB	6'3	175	11
11	George Guevara	HB/DHB	5'6	130	11
14	Robert Compton	WR/DHB	5'5	125	11
18	Brower Foster	WR/CB	5'10	135	11
19	A. J. Brick	HB/CB	5'8	144	11
20	Ron Singleton	HB/HB	5'7	156	12
21	Tom Lee	WR/DHB	5'9	130	11
22	Louis Talamantes	WR/CB	6'0	158	12
23	Rick Mendoza	FB/DHB	5'9	168	12
24	Bill Gillis	WR/CB	5'9	156	11
25	Kevin Recchia	HB/DHB	5'11	174	12
30	Mike McGehee	FB/CB	5'10	165	12
32	Manuel daMotta	FB/LB	5'9	185	12
33	Mike Vensky	FB/MG	5'10	190	12
34	Brian Rebman	FB/CB	5'9	184	12
35	Ron Steele	HB/DHB	5'11	162	11
40	Randy Simmrin	WR/DHB	6'1	157	11
41	Frank Esposito	HB/DHB	5'5	125	11
42	Gary Sanden	TE/DHB	6'1	179	11
43	Craig Beaubien	HB/DHB	5'11	172	11
45	Jim Angelini	WR/CB	5'10	162	11
50	Dennis Vanderwall	C/T	6'4	209	12
51	John O'brien	G/LB	5'10	174	11
53	Bill Deahl	C/T	6'3	226	12
55	Nolan Day	C/MG	5'10	175	11
60	Steve Davis	G/DE	5'10	180	12
61	Jerry Howell	G/MG	5'9	170	11
64	John Cannon	T/DE	6'2	180	12
65	Leo Diaz	G/LB	5'10	178	11
31	Dana McGehee	Kicker	5'8	132	11
67	Bob Olson	T/T	6'2	196	12
69	Bill Wanamaker	C/LB	5'11	176	11
70	Mark Canterbury	T/T	5'9	190	11
71	Mike Delbarian	T/T	6'1	212	12
73	Lenny McCarty	5/5	6'3	210	11
75	Don Raines	T/T	6'4	194	12
79	Ron DeSantis	T/T	5'11	195	11
80	Jerry Dufva	G/DE	6'1	182	11
81	Jim Rode	WR/CB	6'0	164	11
82	Brad Syverud	T/DE	6'0	175	11
83	Randy Stage	WR/CB	6'1	162	12
84	Mike Stewart	WR/CB	6'1	176	11
85	Bob Jarbo	TE/LB	6'2	184	11
86	Greg Gilbert	TE/DE	6'2	185	12
87	Jay Gudzin (Capt)	G/LB	6'1	205	12
88	Greg Smith	T/LB	5'11	180	12
89	Jim Galbraith	TE/DE	6'3	196	12
77	Bill Jacobson	WR/CB	5'11	170	11
7	Dave Tesoro	WR/HB	5'10	160	11
76	Ray Dimick	Kicker	6'2	185	11

BURROUGHS INDIANS

Head Coach Bob Dunivant
Assistants: Craig Bell, Steve Armstrong, George Rosales, Tony DeMaio
Equipment Manager: Matt D' Errico

Illegally kicking or
batting a loose ball.

Touchdown or
field goal.

Time out.

Safety.

Ball ready
for play.

Clock starts.

Officials time out.

Ineligible receiver
down field on pass.

Pushing, helping
runner or
interlocked interference.

Ball is dead.
For touchback,
wave sideways.

Incomplete forward pass.
Penalty declined. No play
or no score.

"COCA-COLA" AND "COKE" ARE REGISTERED TRADE-MARKS WHICH IDENTIFY ONLY THE PRODUCT OF THE COCA-COLA COMPANY. PRINTED IN U.S.A.

FB

Burroughs Varsity Offense

HB

30 Mike McGehee

43 Craig Beaubien

10 Curtis Ihle QB

40 Randy Simmrin WR

86 Greg Gilbert TE Jay Gudzin (Capt) Mike Delbarian T 55 Nolan Day C 60 Steve Davis G 64 John Cannon T 83 Randy Stage
87 G 71 WR

Burbank Varsity Defense

Mike Ballard (83)

Dave Cerbin (71)

Jim Gibson (50)

Frank Baldino (30)

Dave Decker (32)

64—Frank Foust

Fred Hodges (84)

20—Ron Wamhoff

Leo Orange (12)

Scott Adams (41)

Burbank Varsity Offense

Kirk Roberts (72)

42—Ken Walker

John Costanzo (15)

12—Leo Orange

82—Gary Bojorquez

85—Bill Moore

Scott Hunter (75)

62—Steve Nerad

51—Mike Flavin

65—Dave Clayton

74—Dean Buttress

Burroughs Varsity Defense

89

Jim Galbraith

50

Dennis Vanderwall

53

Bill Deahl

70

Mark Canterbury

60

Steve Davis

32

Manuel daMotta

87

Jay Gudzin

19

A. J. Brick

30

Mike McGehee

23

Rick Mendoza

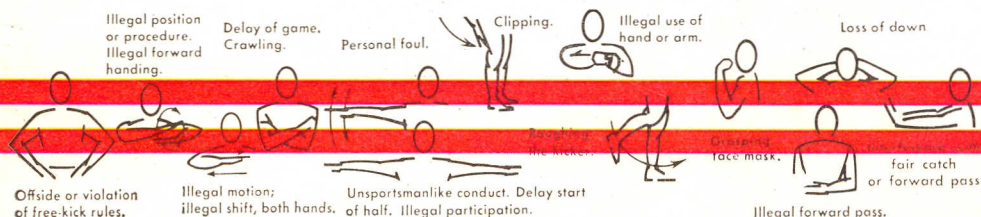
9

Mike Funk

It's the real thing

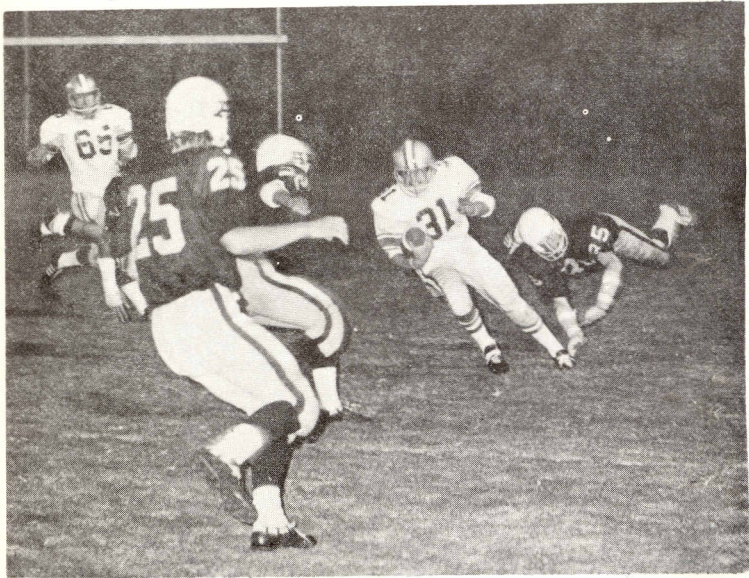
Burbank 1972 Varsity

No.	Name	Pos.	Ht.	Wt.	Gr.
10	Angelo Dahlia	QB	5-10	150	12
11	Walt Smith	QB	5-7	150	11
12	Leo Orange	QB	5-8	160	12
15	John Costanzo	Flanker	5-7	140	12
20	Ron Wamhoff	Flanker	5-10	170	11
21	Ray Calloway	FB	5-8	150	11
22	Craig Belmont	Flanker	5-8	140	12
30	Frank Baldino	FB	5-9	165	12
31	Bruce Smentek	HB	5-6	145	12
32	Dave Decker	HB	6-1	180	12
40	Steve Green	HB	5-8	150	12
41	Scott Adams	FB	5-8	150	12
42	Ken Walker	FB	6-1	180	10
50	Jim Gibson	C	6-1	180	12
51	Mike Flavin	C	5-9	165	12
52	Darell Sorenson	FL	5-9	150	11
60	Steve Duke	G	5-9	165	12
61	John Rome	C	6-0	200	11
62	Steve Nerad	G	5-9	170	12
63	Don Burke	T	6-0	180	11
64	Frank Foust	G	5-11	195	11
65	Dave Clayton	G	5-10	190	12
70	Tom Newman	T	6-1	180	11
71	Dave Cerbin	T	6-3	240	12
72	Kirk Roberts	FB	6-0	210	12
73	Steve Tampa	T	6-1	215	11
74	Dean Buttress	T	6-1	190	11
75	Scott Hunter	T	6-0	180	12
80	Mark Davis	E	5-9	140	11
81	Rich Morrison	E	6-1	165	12
82	Gary Bojorquez	E	6-0	155	11
83	Mike Ballard	E	6-2	190	12
84	Fred Hodges	E	5-9	150	12
85	Bill Moore	E	6-1	193	11

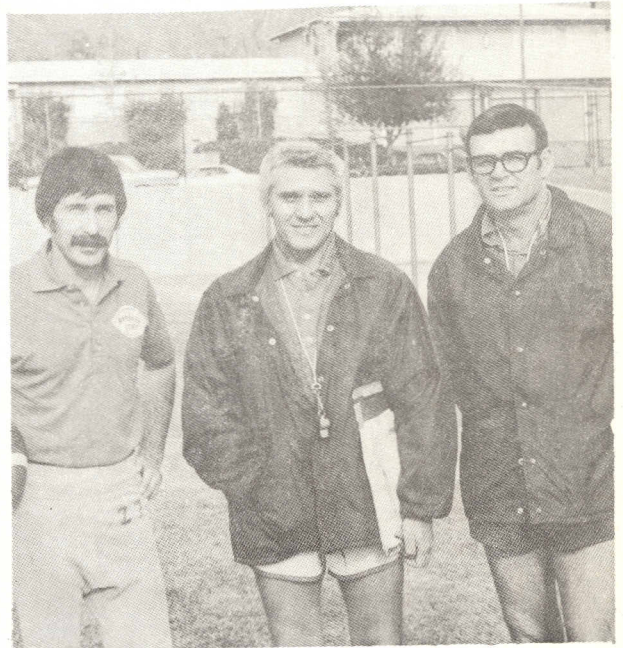




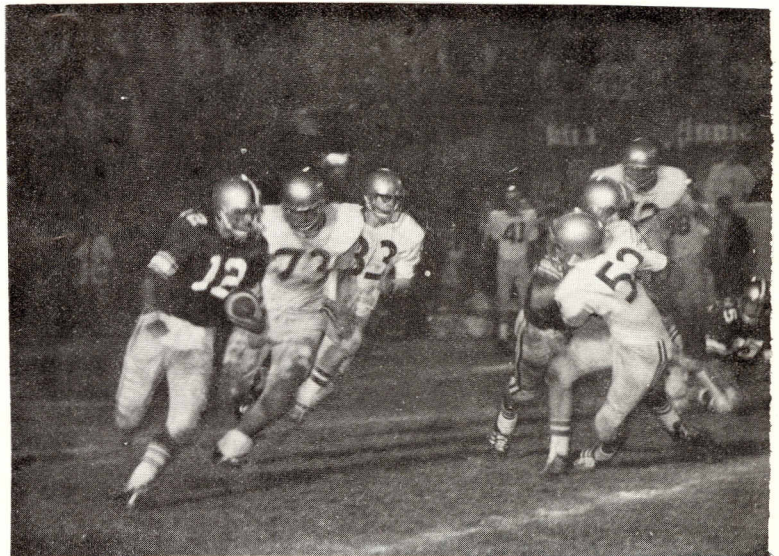
Ken Walker alias, "Super Soph" carrying for Burbank against Muir.



Alhambra varsity game action. Smentak carrying for Burbank.



Burbank Varsity Coaches, (L to R) Leonard Haynes, Head Coach Pete LiPera, and Jack Kelley



Leo Orange running up points against Hoover in a crucial game.

SPRIT FOR 1972 **VS.** PRIDE FOR 1972

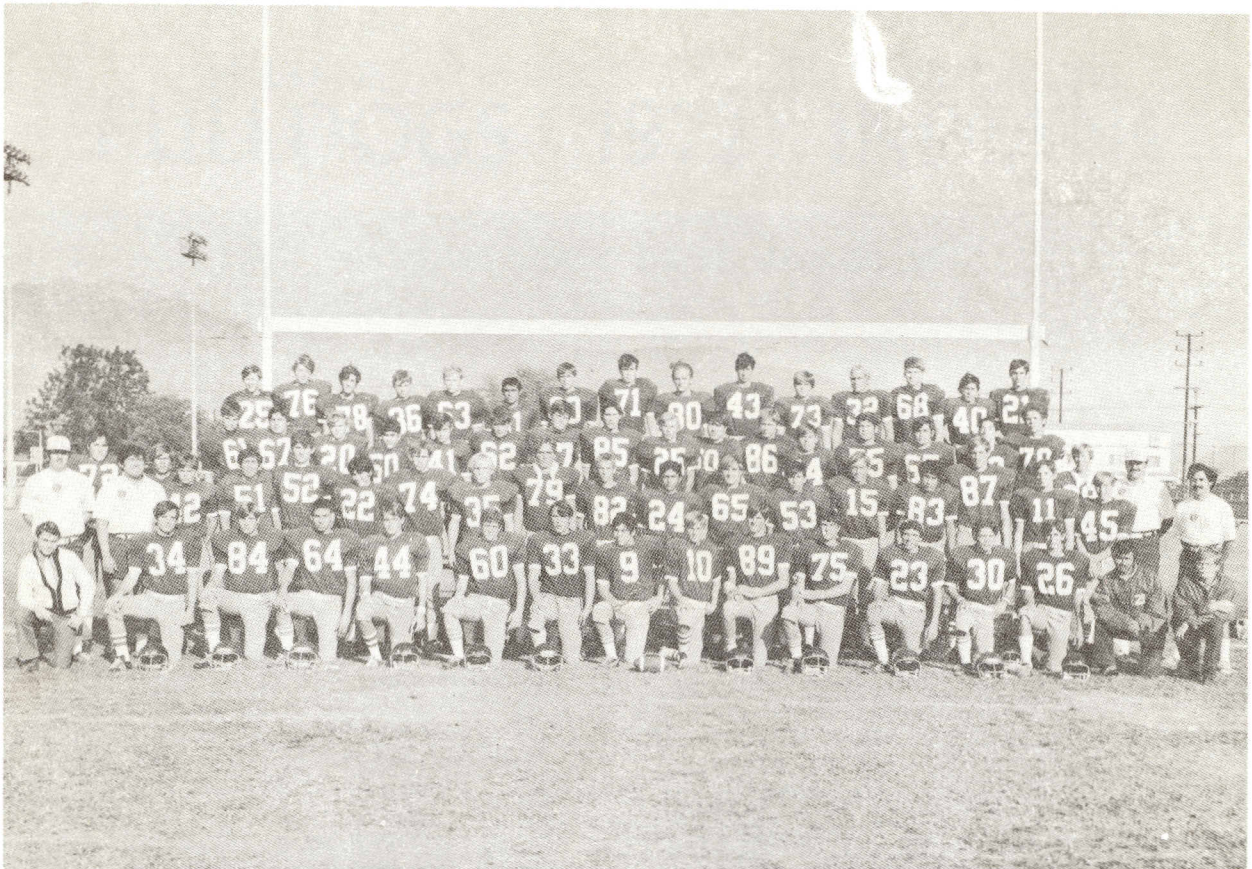
BURBANK BULLDOGS 1972

BURROUGHS INDIANS



Burbank 1972 Sophomores

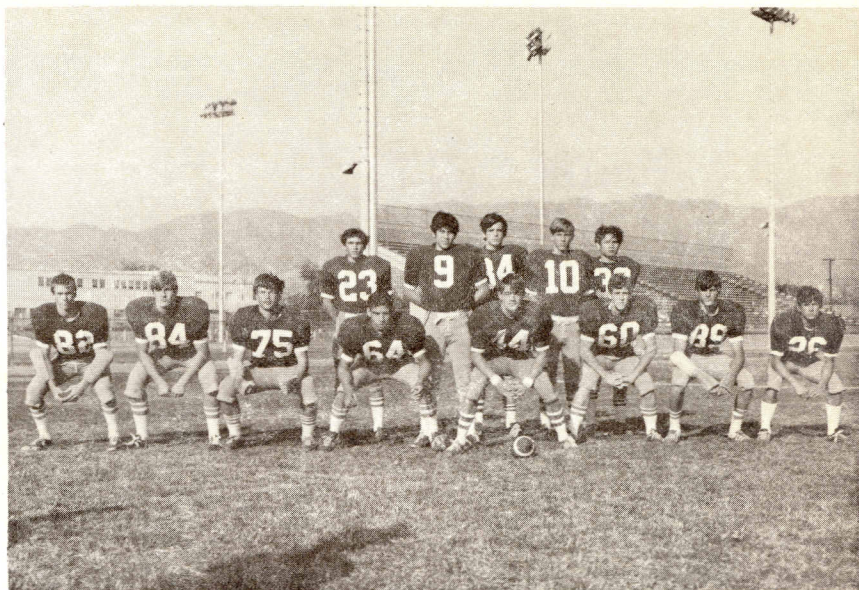
10—Ogle, Vern	QB
11—Higgins, Mel	QB
12—Clark, Bill	QB
14—Barnhart, J	D. Back
20—Carey, Ken	H. Back
21—Lauble, Todd	Flanker
22—Lares, Gil	Def. End
30—Fontanini, S.	Fullback
61—Roach, Larry	Tackle
32—Howitt, E. J.	Fullback
40—Ragan, George	Off. Halfback
41—Remy, Kevin	Def. End
42—Murphy, Ken	O. Half Back
43—Guln, Dan	Fullback
50—Baker, Dave	Center
51—Gorsuch, Clint	Mike
52—Bunch, Ken	Def. Mike
52—Kagan, Dan	Def. Tackle
60—Brown, R.	Off. Guard
61—Weaterwax, Pete	Off. Guard
62—Kiapos, George	(out) Linebacker
63—Hollinghead, Steve	Def. Tackle
65—Richardson, M.	Linebacker
65—Elquist, Jim	Off. Line
71—Elliott, Rick	Def. Tackle
72—Kozell, Curt	Def. Tackle
72—Urrutia, Sonny	Off. Tackle
73—Varon, Greg	Off. Tackle
74—Cartmill, J.	Off. T.
75—Dilibert, Frank	Off. Tackle
80—Baxter, John	Off. End
81—Denison, Vic	Off. End
82—Carlile, W.	End
83—Johnson, Keith	D. Back
84—Addis, Mike	D. End
85—Moore, Dan	Safety
30—Guin, Dan	Fullback
Coach: Larry Auzene	
Assist. Coach: Mike Fiex	



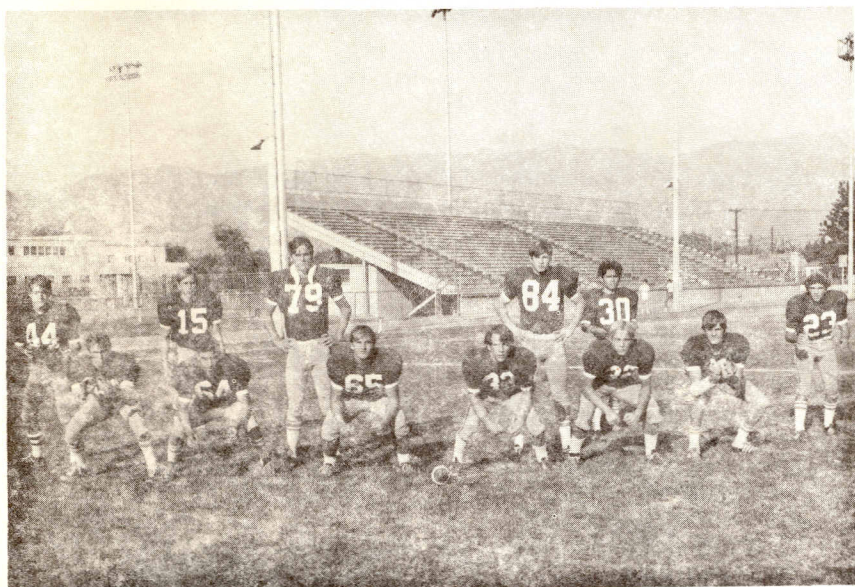
BURROUGHS 1972 SOPHOMORES

- | | |
|--------------------|--------------------|
| 7 Tom Miller | 60 Dennis Leggett |
| 8 Bruce Snyder | 61 Dan Knight |
| 9 Chris Abrahms | 62 Lyle Riddle |
| 10 Dale Reynolds | 63 Paul Small |
| 12 Cary Kranzberg | 64 Rich Mason |
| 14 Gary Warren | 65 Dan Ortoski |
| 15 Jeff Smith | 66 Mark Trujillo |
| 20 Rex Richardson | 67 Jayier Sadeikas |
| 21 Bob Lento | 68 Rich Emanuel |
| 22 Gary Trujillo | 70 Paul Easley |
| 23 Tony Defelicis | 71 Jim Sain |
| 24 Cesar Angobaldo | 72 Greg Lane |
| 25 Doug Gibson | 73 Mark Laydon |
| 26 Joe Mersola | 74 Doug Baumgarten |
| 30 Eric Huitink | 75 Jeff Stone |
| 31 Lance Warren | 76 Dan Houy |
| 32 Jim Hritz | 77 Tim Milner |
| 33 Steve Griswold | 78 Jerry Sherman |
| 34 Robert Jones | 79 Ken Hritz |
| 35 Rich Kephart | 80 Craig Andrews |
| 36 Steve Issaris | 81 Leonard Silva |
| 40 Tony Lauria | 82 Hans Anderson |
| 41 Dave Ruskowitz | 83 Pete Carrisoza |
| 42 Mike Hammond | 84 Brad Stein |
| 43 Rich Soto | 85 Tom Tayrien |
| 44 Al Cunningham | 86 Jim Boysen |
| 45 Ron Bishop | 87 Ed Fiock |
| 50 Pat Repola | 88 Warren Galloway |
| 52 Thomas Cox | 89 Pat Galbraith |
| 53 Vince Padilla | 90 Merle Lintz |
| 55 Mike Frazier | |

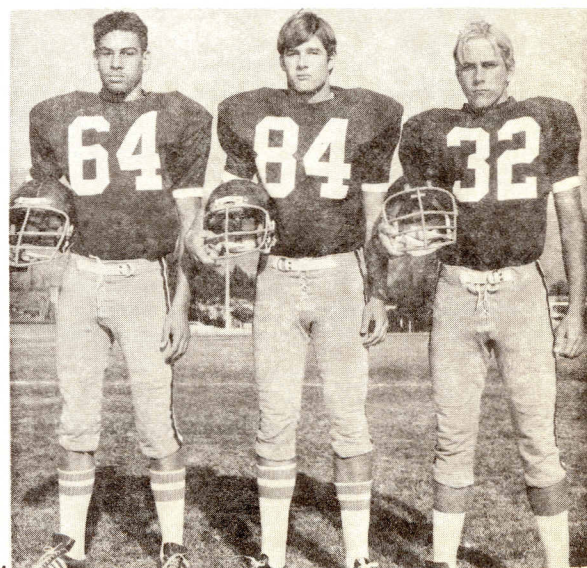
1972 FOOTHILL LEAGUE SOPHOMORE CHAMPIONS



Burroughs Offense (rear left to right)
 Tony Defelicis, Chris Abrahms, Bob Jones,
 Dale Reynolds, and Mark Laydon.
 (front L to R) Hans Anderson, Brad Stein,
 Jeff Stone, Rich Mason, Al Cunningham,
 Dennis Leggett, Pat Galbraith, and Joe
 Mersola.



Burroughs Sophomore Defense;
 (rear left to right) Al Cunningham, Jeff Smith,
 Ken Hritz, Brad Stein, Eric Huitink, Hans
 Anderson.
 (front left to right) Dale Reynolds, Rich Mason,
 Dan Ortoski, Steve Griswold, Jim Hritz, Pat
 Galbraith, Tony Dekelicis



Burroughs Sophomore team captains;
 (left to right) Rich Mason, Brad Stein,
 and Jim Hritz.

JOHN BURROUGHS HIGH



Nominees for Fall Sports Queen at Burroughs
One of the above girls will reign at tonight's game.

by
Dave Golding

Coaching Staff of John Burroughs would like to say THANK YOU to the members of the 1972 Burroughs Boosters Club for their great support during this Football Season. You have really been a great help!

THE COACHING STAFF AT JB

Tonights game will match the Bulldogs from Burbank High School and the Indians from Burroughs. It will be the first time in a few years that the contest will decide who will have the right to represent the Foothill League in the CIF playoffs.

The two cross-town rivals have been playing each other since 1949, and Burbank leads the series by a slim 12-11 game margin.

The Bulldogs will feature a strong defense led by Mike Ballard, Frank Baldino, Jim Gibson, and Dave Cerbin up front, Dave Decker, Kirk Roberts, and Dave Clayton, the linebackers, and Scott Adams, Ron Wamhoff, Bruce Smentech, and Fred Hodges the defensive backs.

The offensive attack for the Bulldogs is anchored by their running backs, sophomore Ken Walker who is leading the league in rushing, and Kirk Roberts, a very powerful back.

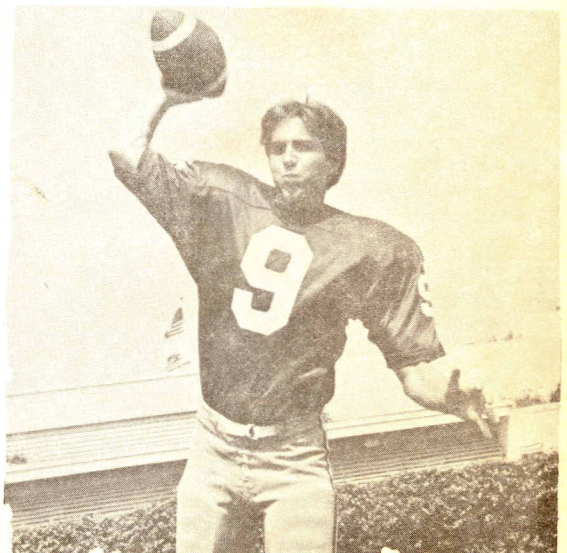
The Indians on the other hand, have primarily a strong passing game with Junior Quarterbacks Curtis Ihle and Mike Funk throwing to one of the leagues better receivers, Randy Simmrin. However, the Indians are not weak at the running game, like it sounds. They have a fine set of backs, such as Mike McGehee and Craig Beaubien.

Burroughs has scored more points than anyone else in the league season, so the games' outcome should boil down to whether or not Burbank's defense can contain the Indians and hold them to a minimum number of points.

Burbank 14-0

PROGRAM STAFF

Editor-in-chief Coach Craig Bell
Managing Editor and Production Editor - Jeffrey Taylor
Journalism Advisor Bette Trempe
Production Advisor Gordon Risser
Concept and Design by JEFF TAYLOR



Quarterback MIKE FUNK, who also doubles as a starting Defensive Back